



Autos as Art

A Portfolio
Michael
Dupuis

Automobiles as Art

An exploration of the automobile as sculpture



1950 Studebaker





Right to left: 1956 Ford Fairlane, 1955 Studebaker Speedster

Not just transportation

The design of the automobile has always fascinated me. To the great auto designers, the sheet metal of an automobile has always been a canvas, or an uncut block of stone, from which they shape and mold designs as creative and beautiful as any sculpture in a museum. This work is an exploration of some of the more intricate designs seen in automobiles from the earlier days of the automobile, when style mattered. There is a reason a lot of these designs are now being recycled by the car designers of today. The design cues and shapes from previous eras still hold up well, and put a lot of modern automotive design to shame.

1959 Chevy Corvette Roadster

Side sculpture detail

One of the most stylish and distinctive Corvettes, the 1959 featured lots of curves, edges and sculptured detail.

© Michael Dupuis



1959 Chevy Corvette Roadster

Interior detail

1959 was the first year to offer an all-black interior.

© Michael Dupuis





1959 Chevy Corvette Roadster

Rear taillight detail

1957 Chevy Bel Air

Headlight and grill detail

Probably the best known of the Chevy Bel Airs, the 1957 featured lots of chrome and huge tail fins.

© Michael Dupuis





1957 Chevy Bel Air

Rear fin detail

© Michael Dupuis



1957 Chevy Bel Air

Rear chrome detail

© Michael Dupuis

1955 Chevy Bel Air

Headlight detail

© Michael Dupuis



1955 Chevy Bel Air

Rear window and side chrome detail

© Michael Dupuis



1960 Chevy Impala

Detail of the rear fin and taillights

Often credited with starting the "Muscle Car Era" the Impala was the first to introduce Chevy's "SS" performance brand.

© Michael Dupuis



1960 Chevy Impala

The sculpture of the side panel with chrome detail

© Michael Dupuis



1955 Ford Crown Victoria

© Michael Dupuis





1955 Ford Crown Victoria

© Michael Dupuis



Detail from a 1962 Buick Skylark

© Michael Dupuis





1959 Ford Galaxie Skyliner Retractable

Front Chrome Detail

The basic Skyliner sold for \$3346 in 1959, a year in which 12,916 were sold. This is probably my favorite classic car. Lots of style, and a "geek" car of its day.

© Michael Dupuis



1959 Ford Galaxie Skyliner Retractable

Tailfin and rear light detail

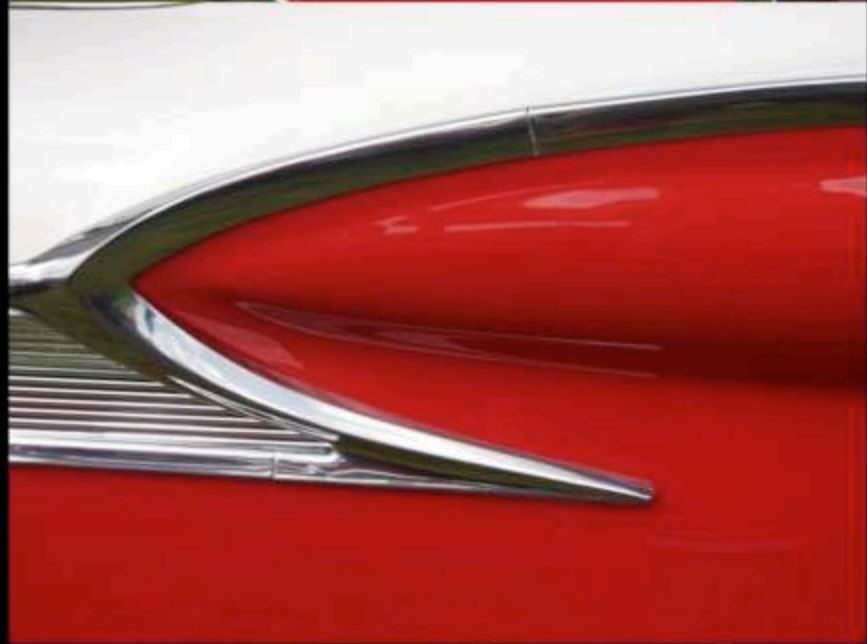
© Michael Dupuis



1959 Ford Galaxie Skyliner Retractable

Detail of where the red and white meet on the side of car

© Michael Dupuis



1959 Ford Fairlane Galaxie Skyliner Retractable

Tailfin

The Skyliner featured an automatic convertible hardtop, a first for a production car.

© Michael Dupuis



1959 Ford Fairlane Galaxie Skyliner Retractable

Decorative Spare Tire

© Michael Dupuis



1955 Chevy Bel Air

© Michael Dupuis



1955 Chevy Bel Air

© Michael Dupuis



1953 Nash Rambler Custom Convertible

Probably one of your more interesting and odd cars, the Rambler Custom features almost nautical styling.

© Michael Dupuis



1953 Nash Rambler Custom Convertible

Close up detail of the hood ornament.

© Michael Dupuis

1934 Ford three window coupe

© Michael Dupuis





1934 Ford three window coupe

1950 Studebaker Commander Land Cruiser

© Michael Dupuis



1955 Chevy Bel Air

© Michael Dupuis



1955 Chevy Bel Air

© Michael Dupuis



1955 Ford Fairlane

© Michael Dupuis





Right to left: 1958 Ford Edsel, 1950 Studebaker, 1950 Ford



1965 Chevy Impala taillights



1950 Studebaker taillight

